

# Pneumatic tube systems

*Solutions for the secure transportation of cash*





## Secure and efficient cash handling

### Solutions for the secure transportation of cash

#### Safety:

Our pneumatic tube system reduces the risks to staff at the tills when handling cash in full view and when transporting cash manually in-house. The installation of systems in full view acts as a deterrent to potential thieves as their potential haul is minimised by the continuous removal of excess money from each checkout which restores its original float.

#### Efficiency:

The float carried at each of the checkouts is kept to a minimum. The counting of cash in the central cash office is spread throughout the day due to the continuous inflow from the tills. The labour cost of removing cash from the tills and supplying change to them is reduced.

Aerocom cash handling systems offer an ideal solution, meeting the individual needs of retail outlets. We supply tubes with outside diameters from 63mm to 160mm for use in the cash disposal area, depending on the coinage, volumes to be transferred and the application.

3



At banks



At motorway toll booths



In supermarkets



At petrol stations

## Cash transportation in the modern retail market

Our systems – an overview

Aerocom offers a wide range of cash handling products, including simple one-way dispatch systems, microprocessor controlled two-way models and our top of the range PC-controlled systems.



## One Way Operation

### The systems in one way operation

In one-way operation the Aerocom Cash handling system connects the checkouts with a receiving station (safe or lockable cabinet station) in the secure area. The cash is transported in carriers or specially designed safety bags at a speed of 6-8 metres per second. The stations can be installed vertically or horizontally, depending upon the layout and design of the checkout area. The tubes are made of PVC, a material that has proven its reliability for decades. Lockable carriers can be supplied on request.

Typical applications for systems in one way operation are: petrol stations, small and medium sized supermarkets, cinemas, banks and toll booths.



## Two Way Operation

### Systems for two way operation

In contrast to the simple cash handling systems, the central station in the security area can supply change to each of the checkouts. This is achieved by means of the Aerocom diverter systems that have been tried and tested in large installations over many years.

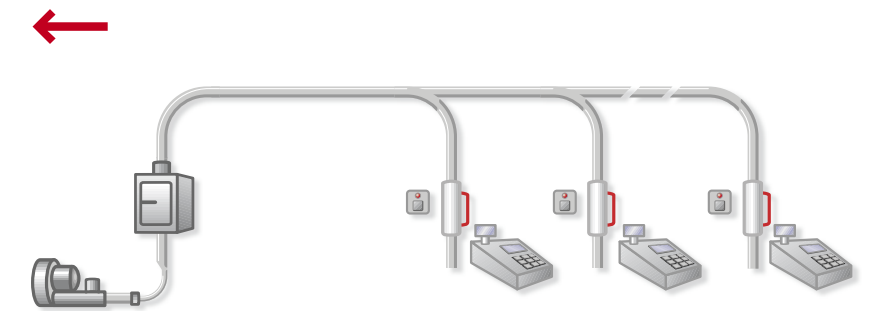
The use of 2, 3 or 4-way diverters enables the system configuration to be suited to many different requirements.



### For cash deposits as a point-to-point system

Continuous cash transportation with an easy to install point-to-point system (Checkout to safe) via PVC tube or flexible tube (transparent or any colour on request). Special cash carriers are used to transport

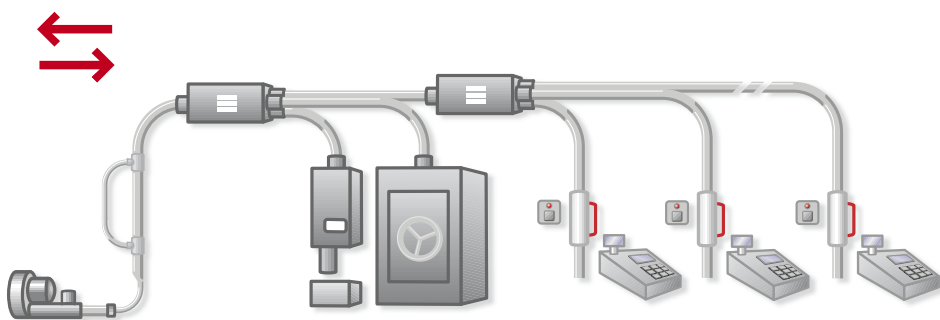
notes and cash. Lockable versions can be supplied on request. These systems are used within smaller discount stores, petrol stations and retail stores.



### For cash deposits from different checkout stations to the secure area.

Sending stations can be connected in sequence and are easy to install to suit the building and the customer's requirements. Lockable versions can be supplied on request.

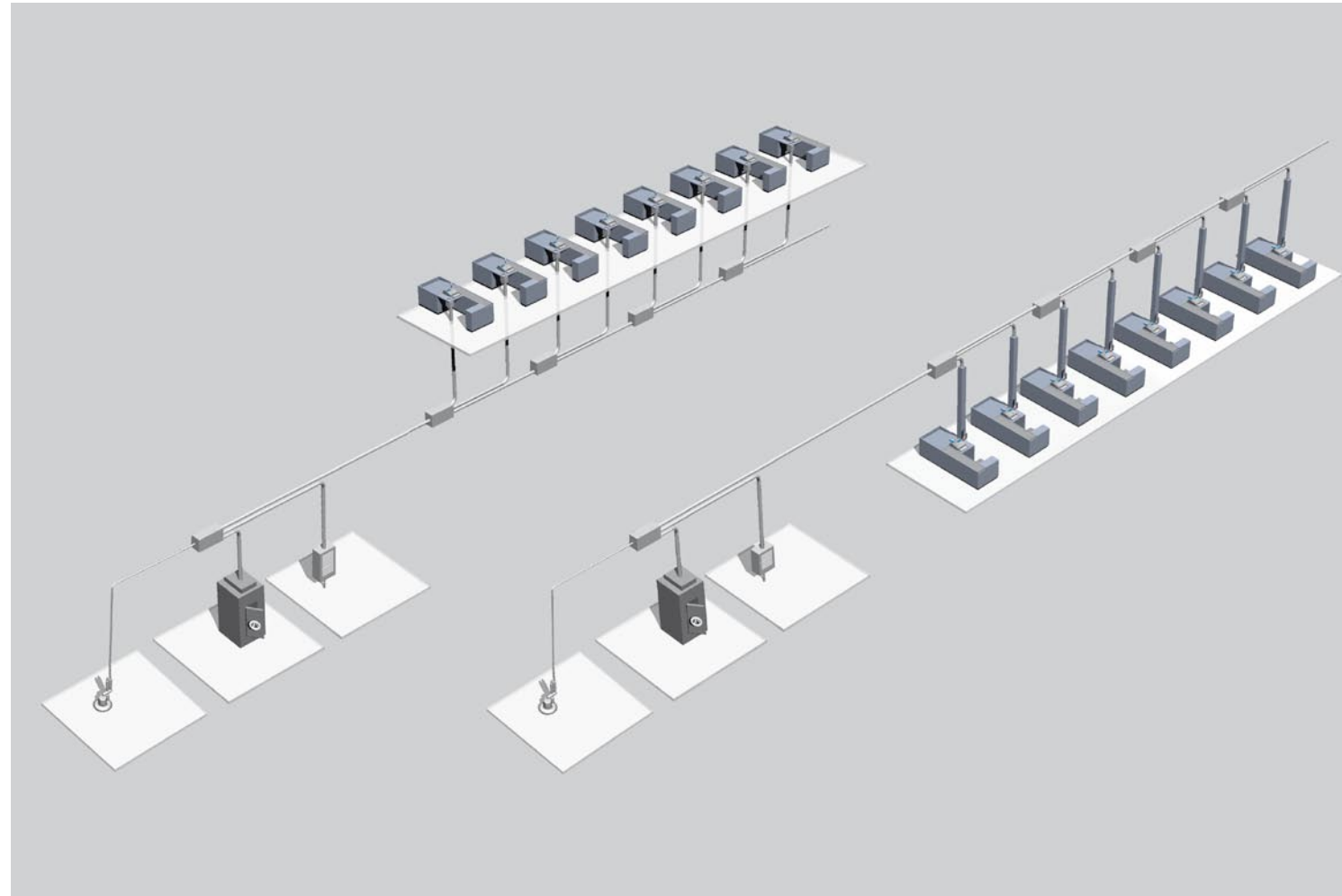
Each station comes complete with integral LEDs showing all functions/states of the system. Sending stations cannot communicate with each other directly.



### For supplying cash and change

A microprocessor controller monitors and coordinates the sending processes and functions of the stations. Reports from each transaction can be printed, showing: date, time and station number in clear text. In addition, previous dispatches are stored within the system's memory.

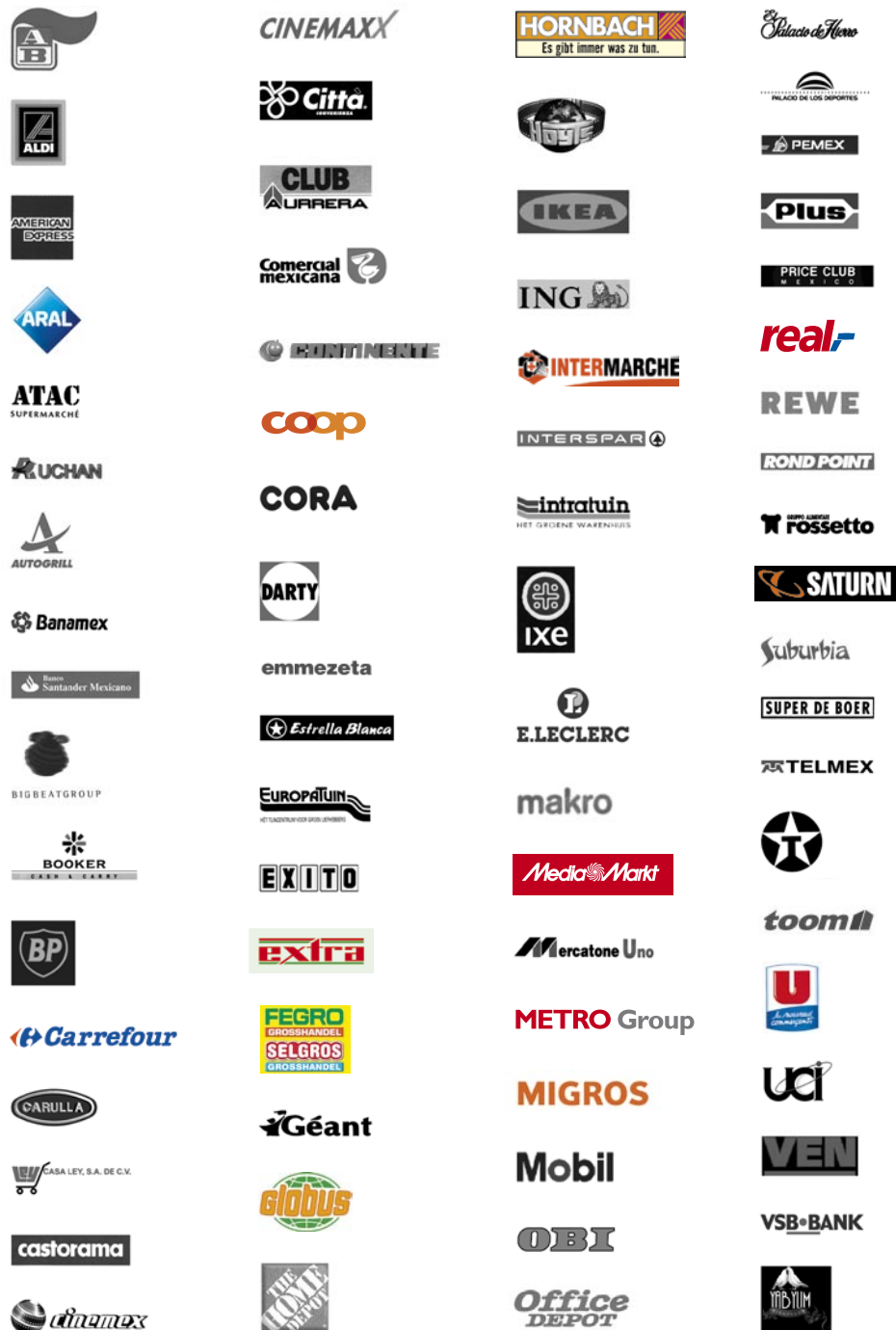
The central station in the secure area, where these records are stored, supplies till stations with change as required. The pneumatic system is designed to ensure that the carriers are gently braked on arrival.



## Advantages at a glance:

- PC-controlled system
- Graphical Windows user interface
- Remote maintenance
- Report generator for all sending and receiving activities
- Reports in open data-exchange format
- Real-time display of status information during operation
- Optional authorisation at the sending stations with swipe card, PIN or transponder reader.
- Destination also programmable with transponder
- Continuous monitoring of the electronics and power supply.

### Some of our international clients:



## Optimise your internal logistic transport systems

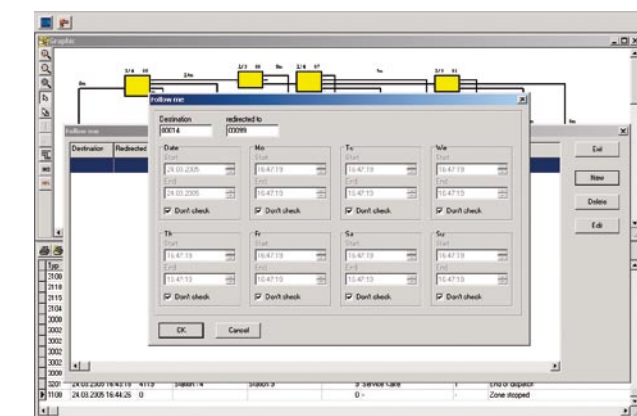
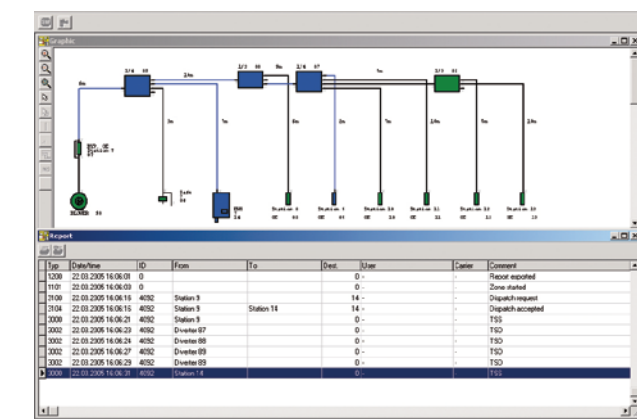
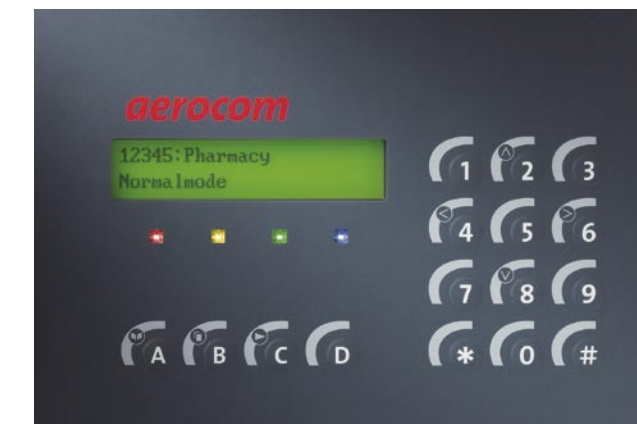
### Microprocessor-controlled

A winning combination of the reputed Aerocom station and diverter technology with state-of-the-art Cash-Handling software. The development of Aerocom's new cash logistics system has been based on our knowledge of international market requirements for a modern pneumatic tube system, plus many years of experience in the Cash- Handling sector. Continuous remote monitoring by an integrated modem is rapid and economical.

The diagram above shows possible configurations for overhead or underfloor-mounted systems.

All sending and receiving operations are displayed in real time on the user-friendly Windows screen. This information is stored on the hard disk for later analysis and can be printed anytime.

- Shown on the right from top to bottom:
1. Control panel with clear text and graphic display at the main station
  2. All processes are shown graphically on the PC. Complete audit trails give time, date, sending station and receiving station details.
  3. The absence mode (Follow me) diverts carriers to an alternative station.



Aerocom is a world leader in the manufacture of modern pneumatic tube systems and internal logistics.

We have the experience and expertise to custom design solutions for virtually any application in pneumatic materials logistics. We can provide special technical solutions to meet individual customer specifications.

We are represented in 65 countries throughout the world. These partners, together with our ten offices in Germany and six in the rest of Europe (Belgium, France, Italy, Switzerland, Spain and Netherlands), keep us close to our customers wherever they are.



Aerocom GmbH & Co.  
Pneumatic Tube Systems  
Adam-Riese-Straße 16  
73529 Schwaebisch-Gmuend  
T +49 (0) 7171 1045-0  
F +49 (0) 7171 1045-299  
info@aerocom.de

[www.aerocom.de](http://www.aerocom.de)